



BEPI An initiative of the Foreign
Trade Association (FTA)
Business Environmental
Performance Initiative

BEPI Assessment

Measuring supply chain environmental performance



FTA
Foreign Trade Association

MEASURING SUPPLY CHAIN ENVIRONMENTAL PERFORMANCE

Understanding how well your supply chain is managing environmental issues is key to defining what risks need to be addressed where.

The **BEPI Assessment** measures the environmental performance of a producer across four most relevant environmental areas, plus environmental management systems.

The three-stepped performance levels will indicate how mature your supply chain is in managing environmental issues.

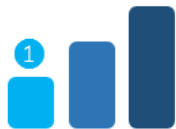


ASSESSMENT 4+1

1

BASIC Legal Compliance

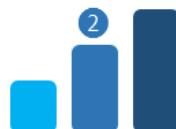
- Basic environmental management structure, with defined management responsibilities and environmental management controls in place
- Information to and training of employees/workers on relevant environmental, health and hazard issues
- Compliance with applicable legal requirements in defined Environmental Performance Areas (EPAs)



2

GOOD Improvement

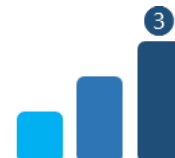
- Environmental Management System (EMS) in place and effective:
- Worker engagement at site level on environmental issues
 - Environmental management and performance in line with recognised international standard practice
 - Demonstrable management of all significant environmental aspects and impacts. Achievement of performance improvement targets.



3

ADVANCED Leading Practice

- Stakeholder engagement by and in value chain to achieve significant performance improvement
- Consideration of potential impacts on, and influence over, activities beyond the immediate environs of the site
- Demonstrable leadership in environmental management and achievement of stretching performance improvement targets



BEPI ASSESSMENT

Environmental Performance is assessed across the four (4) most relevant environmental areas for the producer site, plus Environmental Management Systems. Performance is measured at three levels.

ON-SITE

ASSESSMENT

4+1

ENVIRONMENTAL ASSESSOR

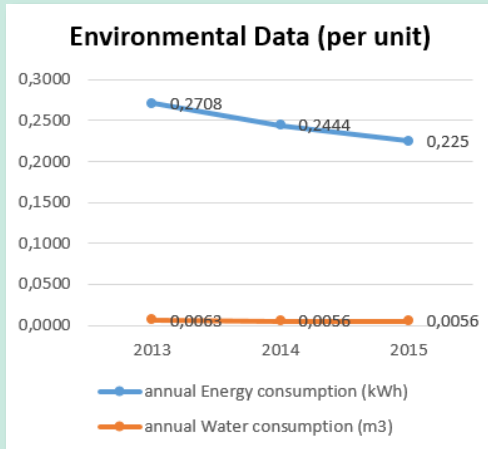
DATA VALIDATION



LEGAL COMPLIANCE



PERFORMANCE



Legal requirements

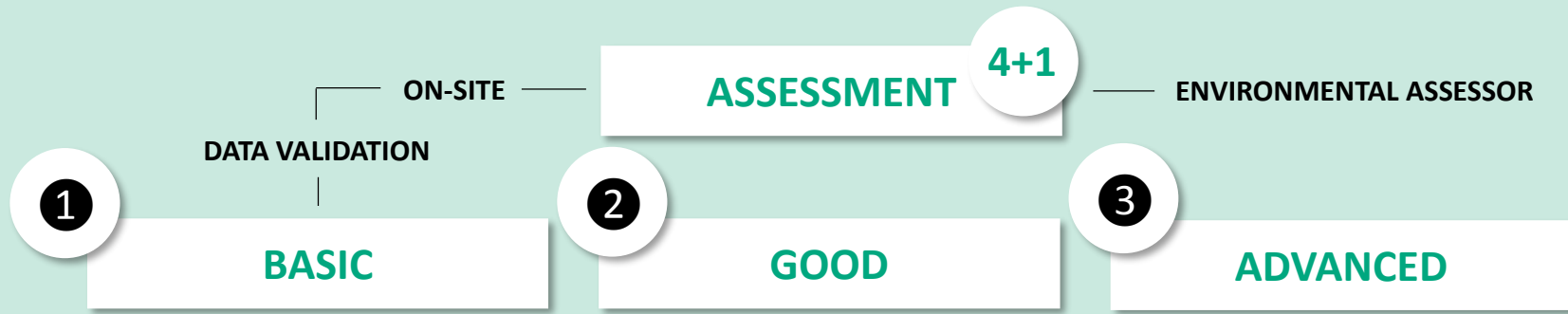
Permits

Environmental Management and Performance



The Environmental Assessor will:

- **Validate** the **Environmental Data** provided by the producer in the Self-Assessment
- Assess **Legal Compliance**
- Assess levels of **Environmental Performance** beyond legal compliance



TARGET PERFORMANCE LEVEL

(defined by the Participant and/or Producer)

-
1. Minimum Practice

 2. Good Practice

 3. Leading Practice

ASSESSMENT DURATION

(man days)

-
- 1 day

 - 2 days

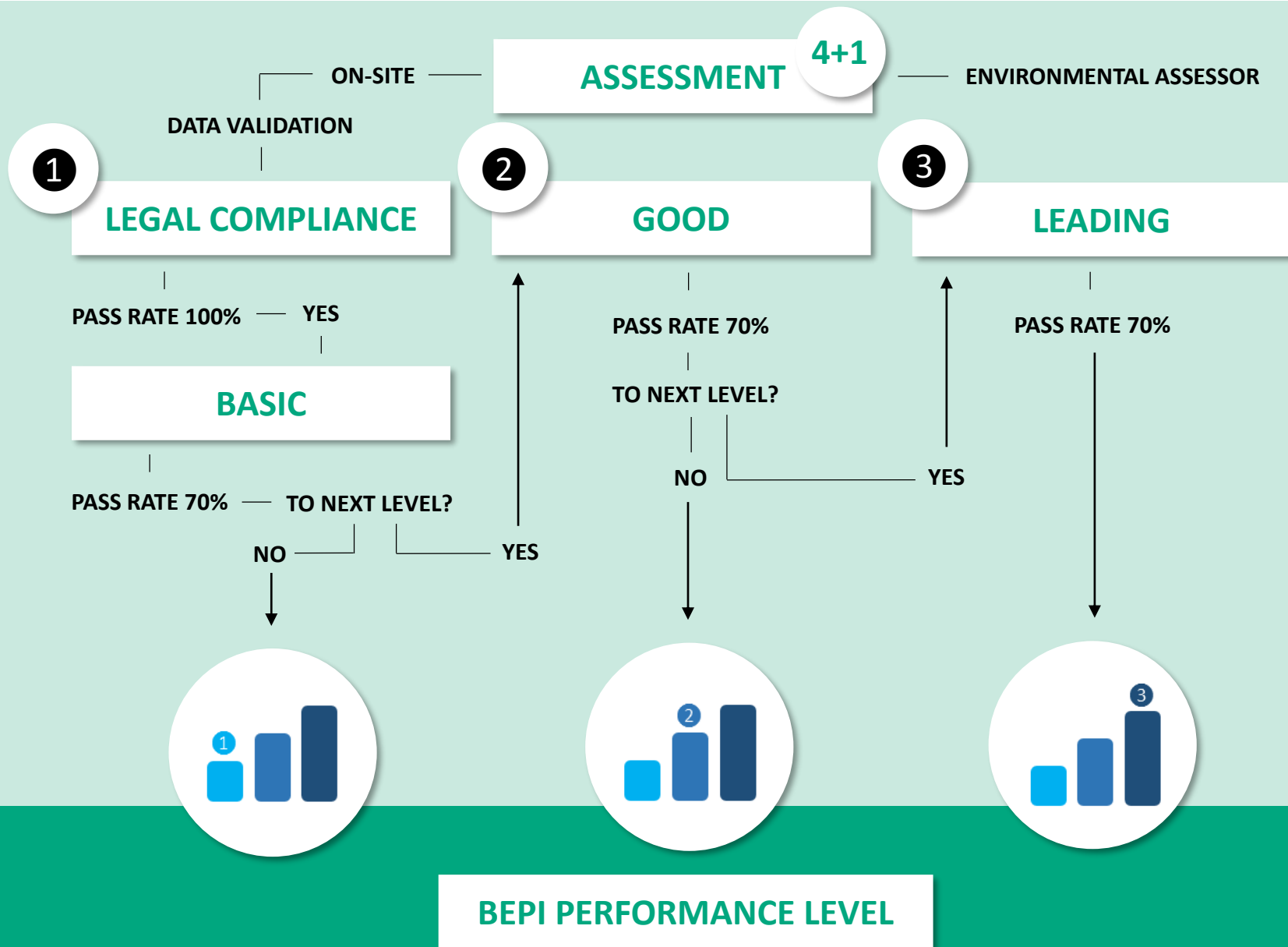
 - 3 days



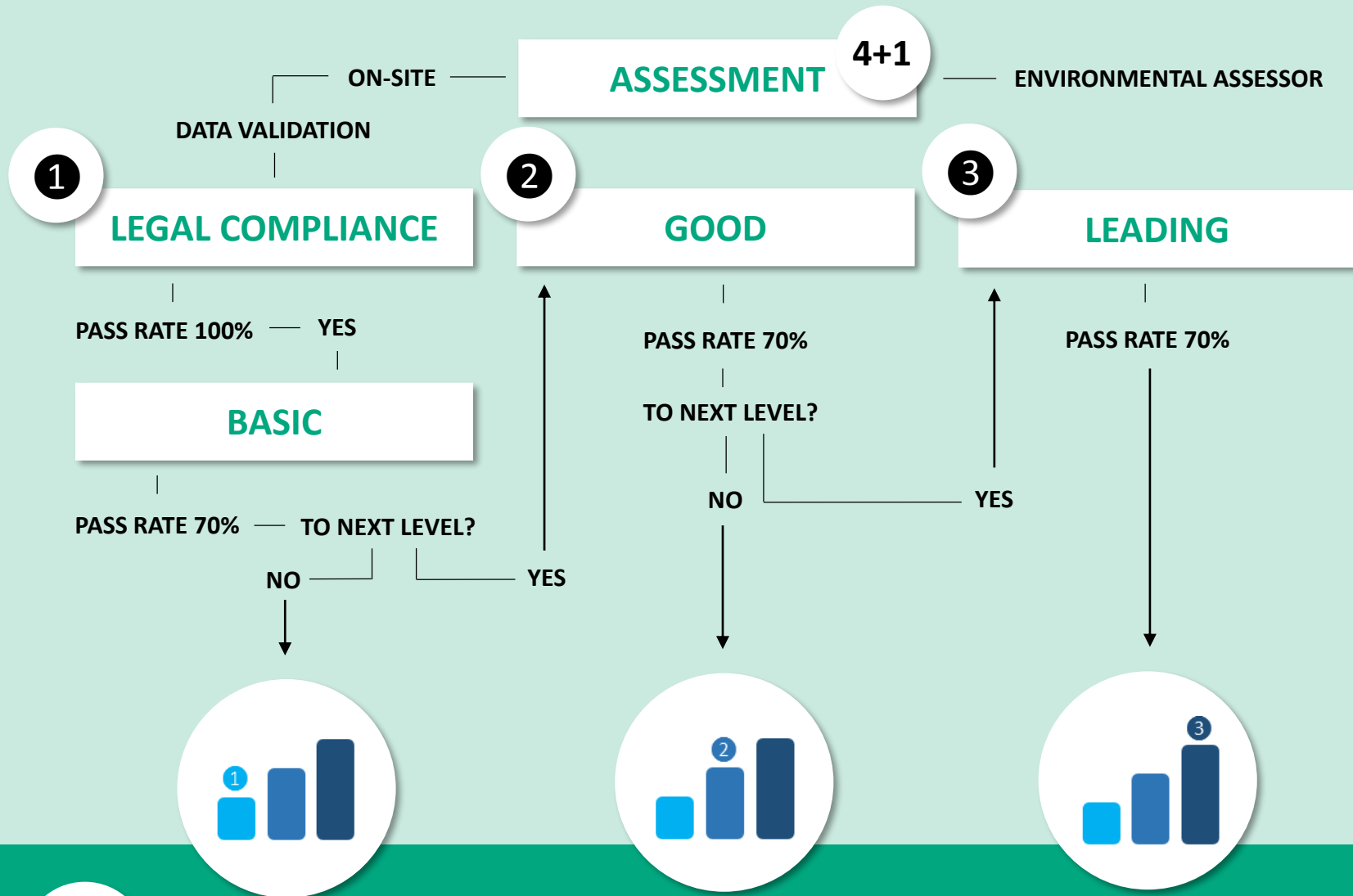
BEPI PERFORMANCE LEVEL

BEPI ASSESSMENT

Select a **target performance level**, to manage and communicate expectations in your supply chain, and manage cost.



During the assessment, the assessor will first respond to Level 1 questions. Only when a sufficient **pass rate** for this level has been achieved, will the assessor proceed to Level 2 questions.



The entire process is supported in the **BEPI Platform**, facilitating every step and providing BEPI Participants with easy access to their supply chain's efforts and progress.

 **ALL IN ONE PLACE**

BEPI ASSESSMENT

Interested?
Contact us at
bepi@fta-intl.org